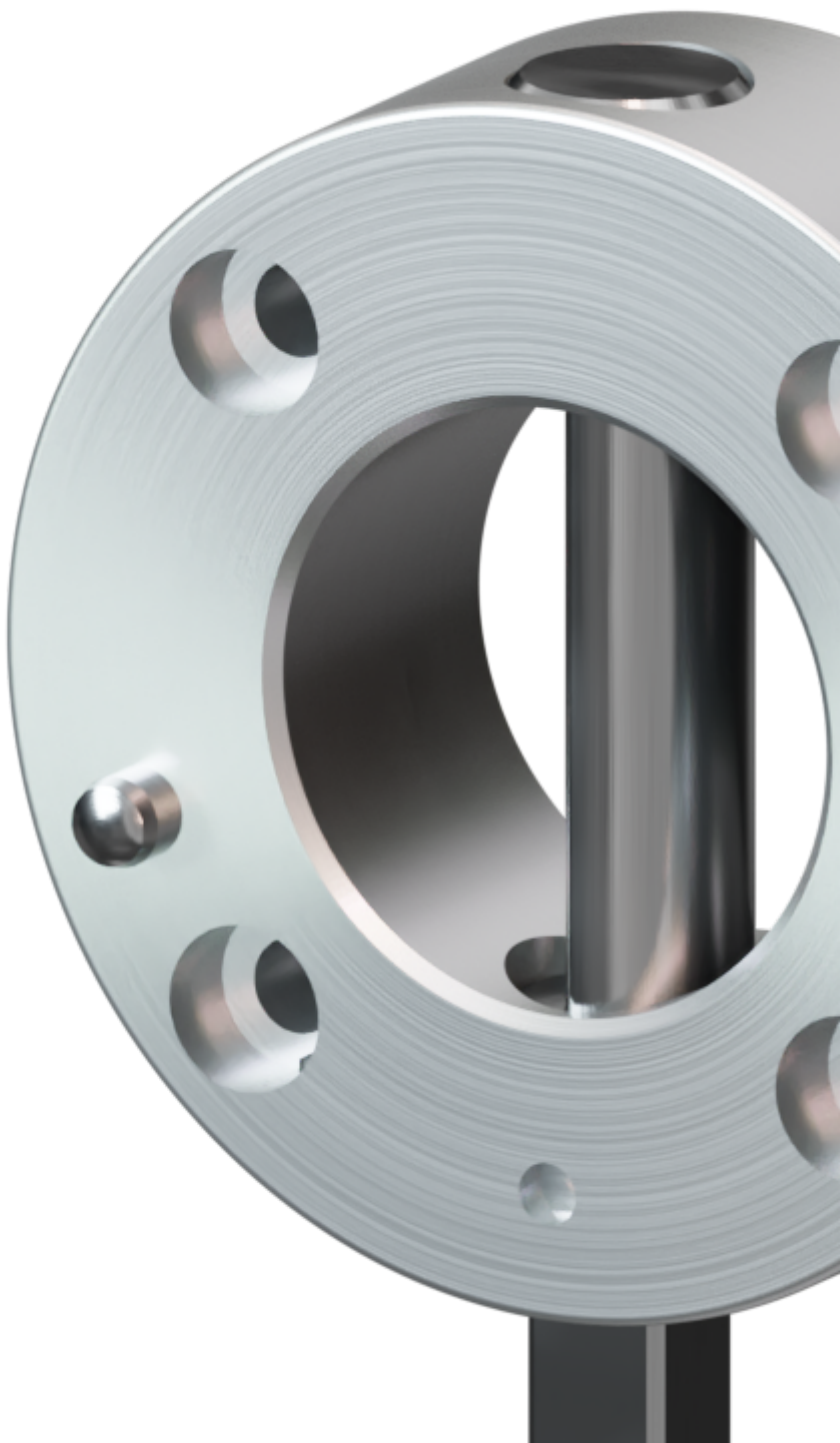
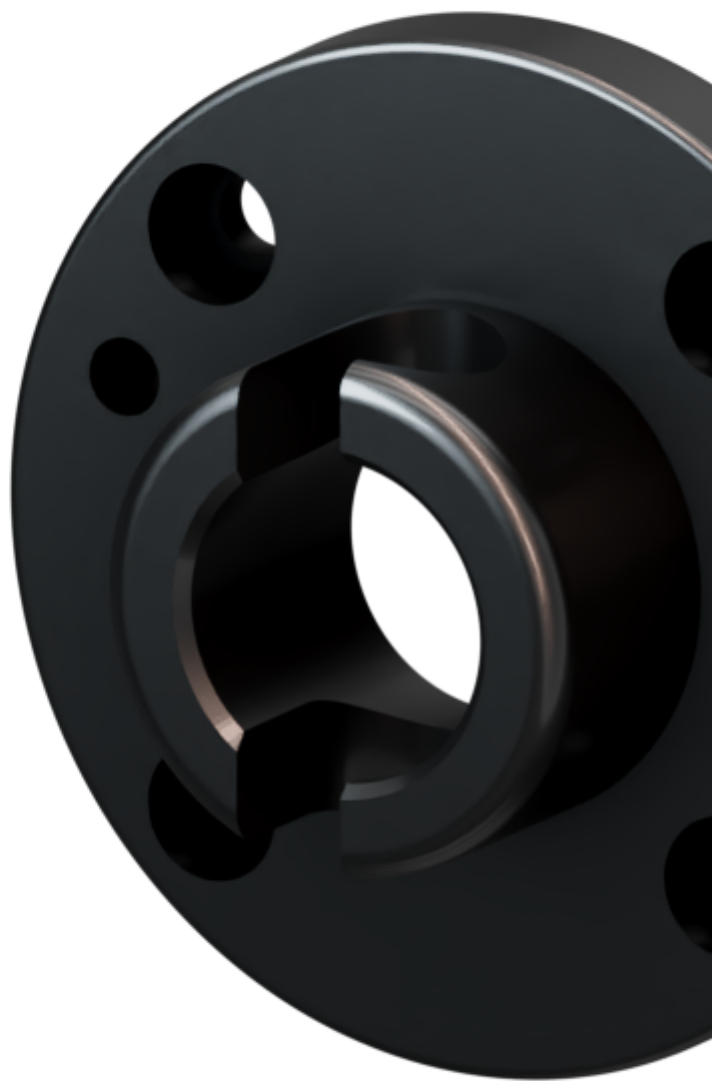


# **Robot Manual Tool Changers || SWS080**

**The SWS series allows accurate tool changing operations with increased safety**







The SWS Connector is our power pack for applications with increased force and torque loads. The semi-cylindrical bolt accurately joins the upper and lower assembly without play. A centering disc can be installed on both the upper assembly (robot side) and lower assembly (tool side) of the robot and ensures that the tools are correctly aligned with the robot arm.

---

Our manual tool changers range aims at solving quick equipment change issues for many applications. These tool changers can be seen as quick, repeatable, and reliable mechanical connectors that can serve many purposes: robot tooling change, special machinery utility change or even making a tool stand movable. Installing such a kind of quick connection device makes your equipment versatile, and upgradable, and eases maintenance operation while reducing downtimes.

## **Advantages**

- Withstands high loads with low dead weight
- Can be released and closed with one handle
- During locking, the lower assembly is pulled around the locking stroke
- Interface according to DIN EN ISO 9409-1

## **Benefits**

- Does not require a deep review of the mechanical structure to be integrated.
- Cost savings through reduced maintenance downtime.
- Improved equipment versatility and upgradability and then extended productivity.
- Mitigate the need of specifically designed mounting interfaces

## Related industries

## At your service

Need help in selecting the right product ?

Need more information ?

[Contact us](#)

- [PDF](#)
- 

- [Technical Info](#)
- [Accessories](#)
- [Drawings](#)
- [3D](#)

	SWS080	SWS080-N
<b>Basic material</b>	Steel	steel, nitrated
<b>Repeat accuracy</b>	0,02 mm	
<b>Pitch circle diameter</b>	63 mm	
<b>Tension Fz</b>	2500 N	3000 N
<b>Compression -Fz</b>	235 kN	313 kN

## Operating conditions

**Operating temperature range** -30 to +120 °C

**Operating pressure** 6 bar  $\pm$ 1

**Notice:** The provided technical data are the higher limits recommended in static condition. To obtain the correct dimensioning of the product, it

is necessary to hold account of all the applicable dynamic forces, including the inertia of the manipulator, the configuration of the tools and the external forces applied.

### **No files actually**

For more informations

[Contact us](#)

### **No files actually**

For more informations

[Contact us](#)

The manual Tool Changers are designed and manufactured by GRIP Gmbh.

Product Engineering Services is the Distributor of GRIP for the territory of Belgium and France