

# PLAY 30X7 | P/N 81401193

Magswitch LAY series utilizes field interaction between individual magnets to increase depth of field and spread the attractive force over a larger footprint. This allows for greater working loads and increased control over larger work pieces. With customizable pole shoes to fit almost any application, the LAY is a great all-around tool that is perfect for picking pipe and round as well as large plate steel.

## WARNING!

**Do Not Operate Unless In Contact With Ferrous Target**

## Specifications

|  |                                       |              |
|--|---------------------------------------|--------------|
| Nominal Maximum Breakaway Force <sup>1,2</sup> | 782.6 lb                              | 355 Kg       |
| Nominal Maximum Shear Force <sup>1,2</sup>     | 215.3 lb                              | 97.67 Kg     |
| Thickness for De-Stack <sup>3</sup>            | 0.187 in                              | 4.76 mm      |
| Minimum Actuation Pressure                     | 26.11 psi                             | 1.8 Bar      |
| Maximum Actuation Pressure                     | 116.03 psi                            | 8.0 Bar      |
| Off-Target Actuation Pressure                  | 60.92 psi                             | 4.2 Bar      |
| Air Port Threads                               | 2x M5x0.8                             |              |
| Net Weight                                     | 10.6 lb                               | 4.8 Kg       |
| Individual Magnetic Pole Footprint             | 10.16"x1.6"                           | 258mm x 41mm |
| Mounting Options                               | 2x Side: Ø8-M8-Ø8<br>2x Top: Ø8-M8-Ø8 |              |



| Material Thickness<br>- mm (in)                   | 0.60<br>(0.024)  | 0.80<br>(0.031)  | 1.20<br>(0.047)   | 3.00<br>(0.118)    | 4.76<br>(0.187)    | 6.35<br>(0.250)    | 9.50<br>(0.374)    | 12.70<br>(0.500)   | 50.80<br>(2.000)   |
|---|------------------|------------------|-------------------|--------------------|--------------------|--------------------|--------------------|--------------------|--------------------|
| Maximum Force <sup>1,2,5</sup><br>- kg (lbs)      | 30.57<br>(67.39) | 31.50<br>(69.45) | 59.20<br>(130.51) | 177.27<br>(390.81) | 210.10<br>(463.19) | 252.07<br>(555.71) | 307.30<br>(677.48) | 355.00<br>(782.64) | 354.57<br>(781.69) |
| Required Air Pressure <sup>4</sup><br>- bar (psi) | 3.60<br>(52)     | 3.20<br>(46)     | 2.80<br>(41)      | 1.80<br>(26)       | 1.80<br>(26)       | 1.80<br>(26)       | 1.80<br>(26)       | 1.80<br>(26)       | 1.80<br>(26)       |

<sup>1</sup> Determined in laboratory environment on 2" thick SAE1018 Steel with surface roughness 63 micro inches with optimized pole shoes. Many factors contribute to the actual breakaway force and safe working load in each application. Consult a Magswitch Applications Engineer and test the Magswitch in each application before deployment.

<sup>2</sup> All data applies to unit with flat pole shoes installed.

<sup>3</sup> Determined with SAE1018 Steel L=200mm W=200mm.

<sup>4</sup> Values may vary by +/- 5%.

<sup>5</sup> Maximum forces listed above are not safe lifting forces. Designer must take into account safety factor when specifying tool. Magswitch recommends SWL = 5:1 for most applications.

$$SWL \text{ (Safe Working Load)} = \frac{\text{Maximum Force}^5}{\text{Safety Factor} (\geq 5)}$$

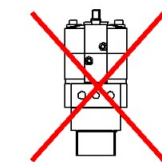
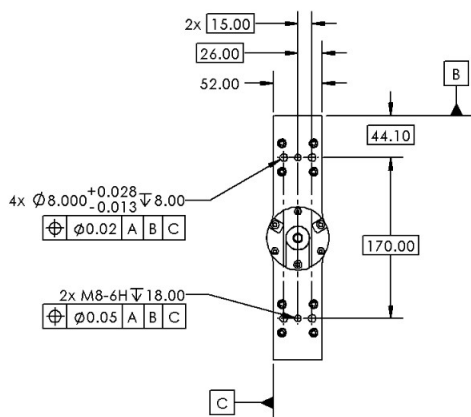
***Pole shoes required for operation. Not included with base tool, must be purchased separately.***

### Standard Kits Available:

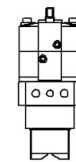
|                                       |         |
|---------------------------------------|---------|
| PLAY30X7 Standard Pole Shoe Kit       | 8800739 |
| PLAY30X7 2mm Comb/Tooth Pole Shoe Kit | 8800748 |
| PLAY30X7 Prox Cap Kit                 | 8800758 |

## Drawing

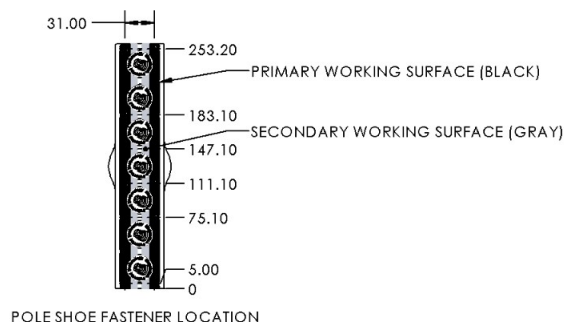
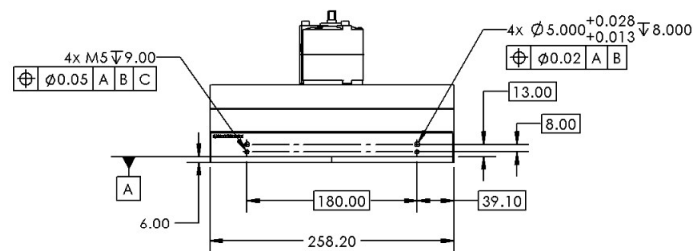
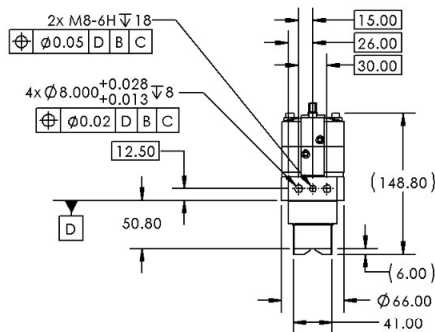
Dimensions include standard pole shoes (8800739).



WITHOUT POLE SHOES



WITH POLE SHOES





MAGSWITCH PLAY 30X7

P/N: 81401193

+ 1(303) 468.0662

[magswitch.com](http://magswitch.com)

## Center of Mass

Does not include pole shoes.

