



Magswitch Technology, Inc.  
8774 Yates Dr. Suite 140  
Westminster, CO 80031  
Magswitch.com.au  
303-468-0662

## Magswitch M10AY ASC

### P/N: 8140543

Magswitch “AY” series utilizes field interaction between individual Magswitch units to manipulate magnetic field shape allowing for a deeper or shallower depth of field and increased holding in shear while utilizing a single actuator. This makes the “AY” series the perfect cost effective unit for de-stacking operations and lifting flat steel in shear.

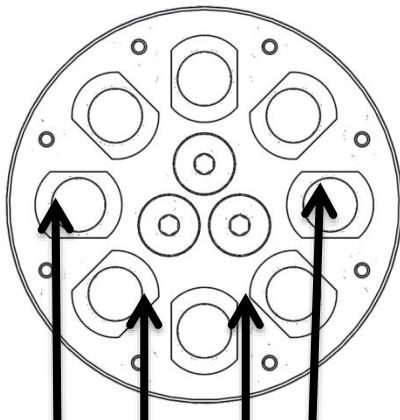


**WARNING!**  
**Do Not Operate Unless In  
Contact With Ferrous Target**

#### SPECIFICATIONS

##### P/N: 8140543 - MAGSWITCH M10AY ASC

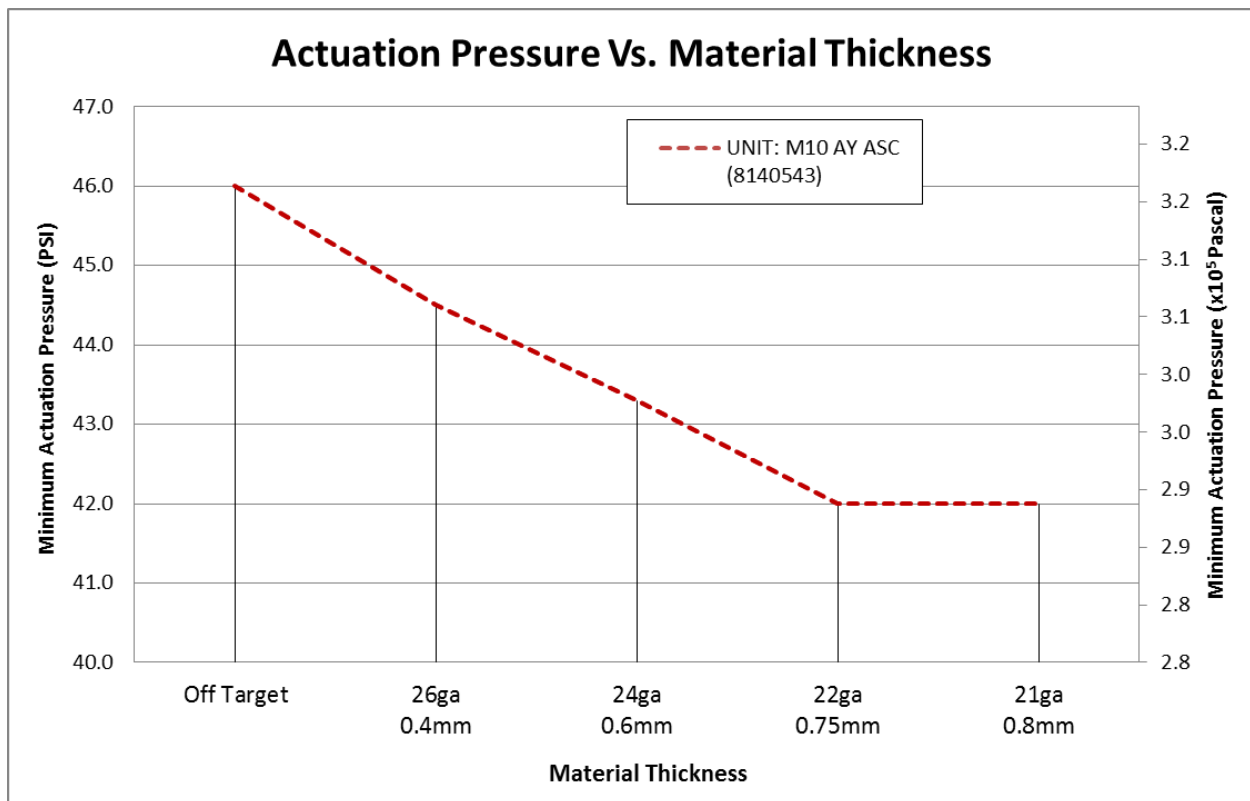
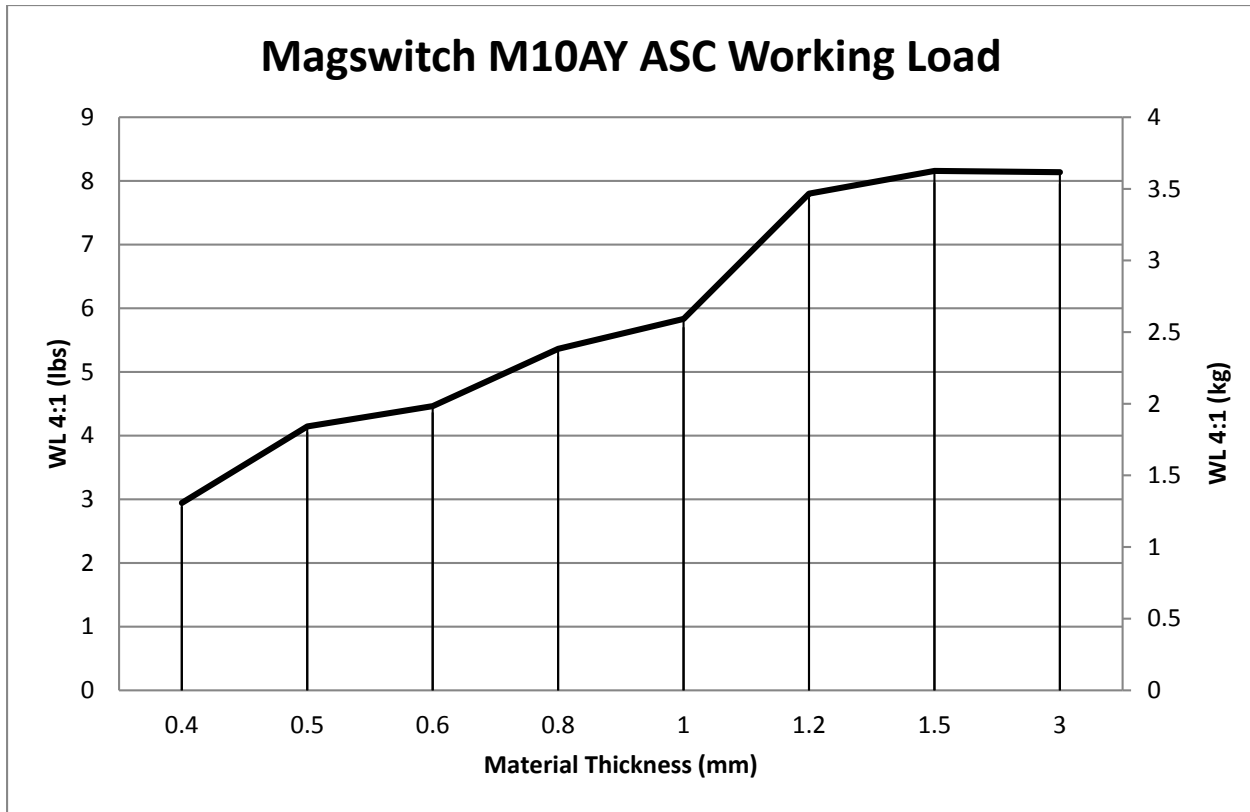
Max Breakaway*	53 lbs/24.1 kg
Working Load 4:1*	13.25 lbs/6.0 kg
Full Saturation Thickness	20 ga/1mm
Max Shear 2:1*	2.6 lbs/1.2 kg
Minimum Thickness for De-Stack	20 ga/1mm
Min Actuation Pressure	40 psi/2.8x10 <sup>5</sup> pa
Max Actuation Pressure	100 psi/6.9x10 <sup>5</sup> pa
Off Target Actuation Pressure	46 PSI/3.2x10 <sup>5</sup> pa
Net Weight	1.0 lbs/0.45 kg
Air Port Thread	M5x0.8
Mounting Thread	M6x1.0
Overall Height	105.00 mm
Magnetic Pole Footprint	Ø56.5 mm



**WORKING SURFACE**

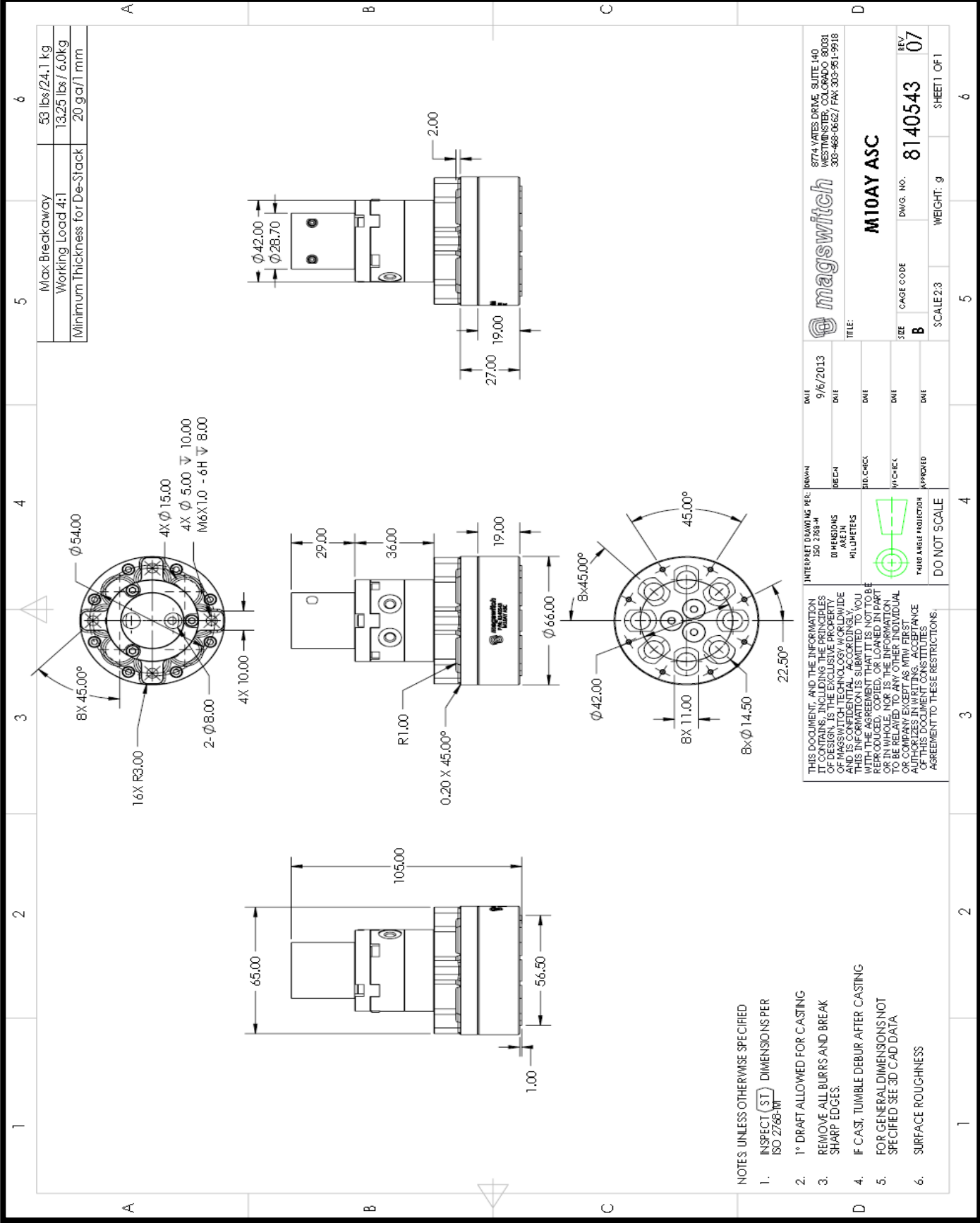
Part Number 110727  
Revision Date: March 12, 2014

\* Max Breakaway determined in laboratory environment on 2" thick SAE1018 Steel with surface roughness 63 micro inches. Many factors contribute to the actual breakaway force in each application. Always test the magswitch in each application before deployment. Refer to the magswitch information booklet for more information.



Part Number 110727  
Revision Date: March 12, 2014

\* Max Breakaway determined in laboratory environment on 2" thick SAE1018 Steel with surface roughness 63 micro inches. Many factors contribute to the actual breakaway force in each application. Always test the magswitch in each application before deployment. Refer to the magswitch information booklet for more information.



- NOTES: UNLESS OTHERWISE SPECIFIED
1. INSPECT (ST) DIMENSIONS PER ISO 2768-MT
  2. 1° DRAFT ALLOWED FOR CASTING
  3. REMOVE ALL BURRS AND BREAK SHARP EDGES.
  4. IF CAST, TUMBLE DEBUR AFTER CASTING
  5. FOR GENERAL DIMENSIONS NOT SPECIFIED SEE 3D CAD DATA
  6. SURFACE ROUGHNESS

THIS DOCUMENT, AND THE INFORMATION IT CONTAINS, INCLUDING THE PRINCIPLES OF DESIGN, IS THE EXCLUSIVE PROPERTY OF MAGSWITCH TECHNOLOGY WORLDWIDE AND IS CONFIDENTIAL ACCORDINGLY, THIS INFORMATION IS SHARED WITH YOU WITH THE UNDERSTANDING THAT IT IS NOT TO BE REPRODUCED, COPIED, OR LOANED IN PART OR IN WHOLE, NOR IS THE INFORMATION TO BE RELATED TO ANY OTHER INDIVIDUAL OR COMPANY EXCEPT AS WITH FIRST PARTY AGREEMENT. ANY VIOLATION OF THESE RESTRICTIONS, AGREEMENT TO THESE RESTRICTIONS.

INTERPRET DRAWING PER: DRAWN ISO 2768-H DIMENSIONS ARE IN MILLIMETERS THIRD ANGLE PROJECTION DO NOT SCALE

DATE	9/6/2013	DATE	9/6/2013
DESIGN		DATE	
DESIGN		DATE	
DESIGN		DATE	
DESIGN		DATE	
DESIGN		DATE	

**magswitch**  
8774 VATES DRIVE, SUITE 140  
WESTMINSTER, COLORADO 80091  
303-468-0862 / FAX: 303-951-9918

**M10AY ASC**

REV. 07  
DWS. NO. 8140543  
CAGE CODE B  
SCALE 2:3  
WEIGHT: .9  
SHEET 1 OF 1



Part Number 110727  
Revision Date: March 12, 2014