

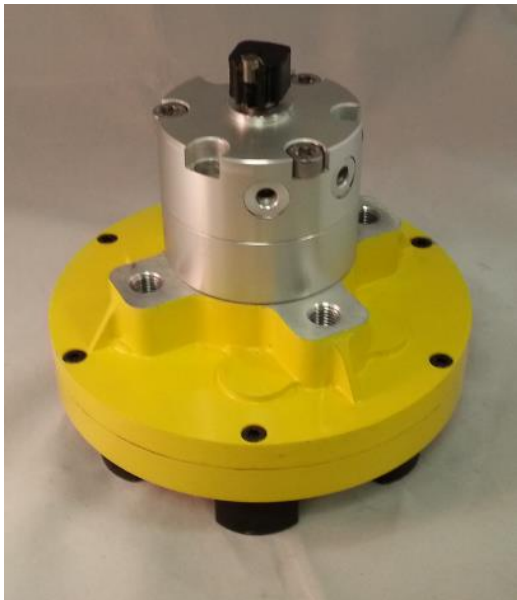


Magswitch Technology, Inc.
 8774 Yates Dr. Suite 140
 Westminster, CO 80031
 Magswitch.com.au
 303-468-0662

Magswitch M20AY JSC

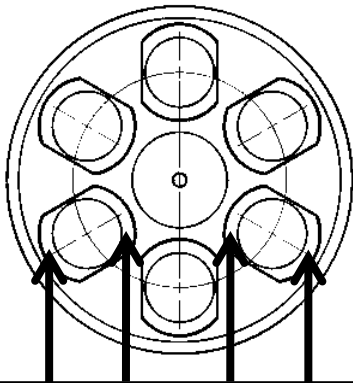
P/N: 8140590

Magswitch “AY” series utilizes field interaction between individual Magswitch units to manipulate magnetic field shape allowing for a deeper or shallower depth of field and increased holding in shear while utilizing a single actuator. This makes the “AY” series the perfect cost effective unit for de-stacking operations and lifting flat steel in shear.



WARNING!
Do Not Operate Unless In
Contact With Ferrous Target

SPECIFICATIONS	
P/N: 8140590 - MAGSWITCH M20AY JSC	
Max Breakaway*	380 lbs/172.7 kg
Working Load 4:1*	95 lbs/43.2 kg
Full Saturation Thickness	¼"/6.35 mm
Max Shear 2:1*	45.75 lbs/20.8 kg
Minimum Thickness for De-Stack	¼"/6.35 mm
Min Actuation Pressure	50 psi/3.4x10 ⁵ pa
Max Actuation Pressure	100 psi/6.9x10 ⁵ pa
Off Target Actuation Pressure	72 psi/5.0x10 ⁵ pa
Net Weight	3.2 lbs/1.45 kg
Air Port Thread	M5x0.8
Mounting Thread	M8x1.0
Overall Height	126.25 mm
Magnetic Pole Footprint	97.5x21.7 mm



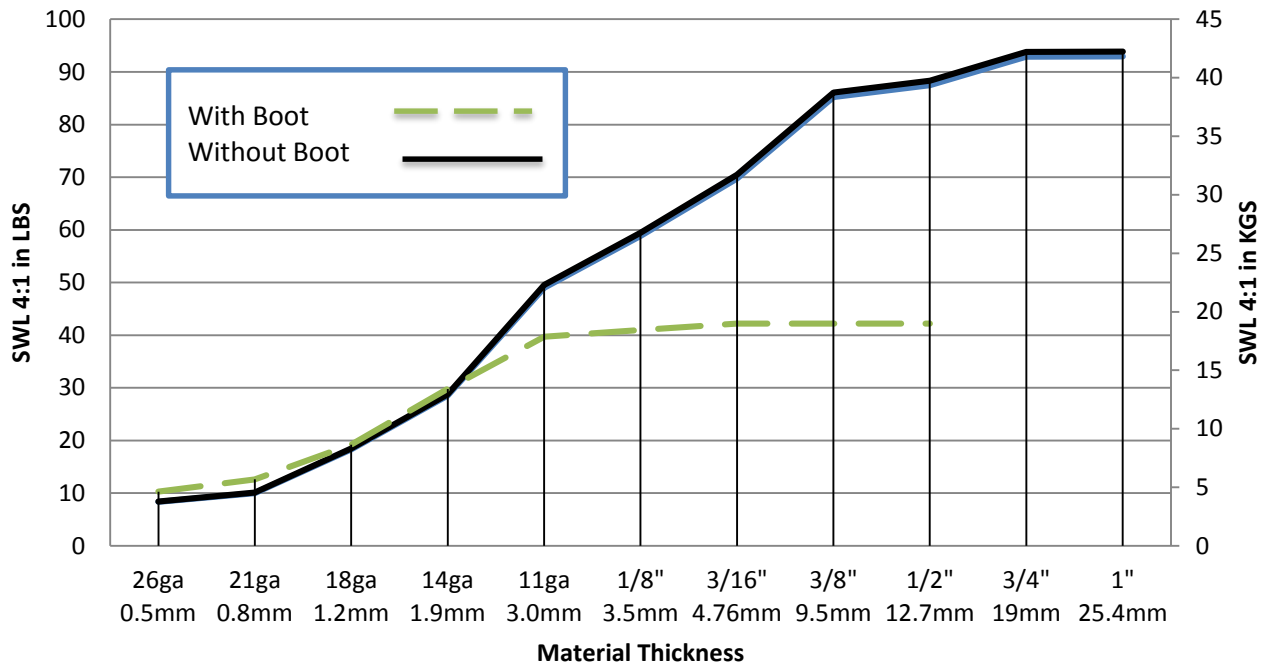
WORKING SURFACE



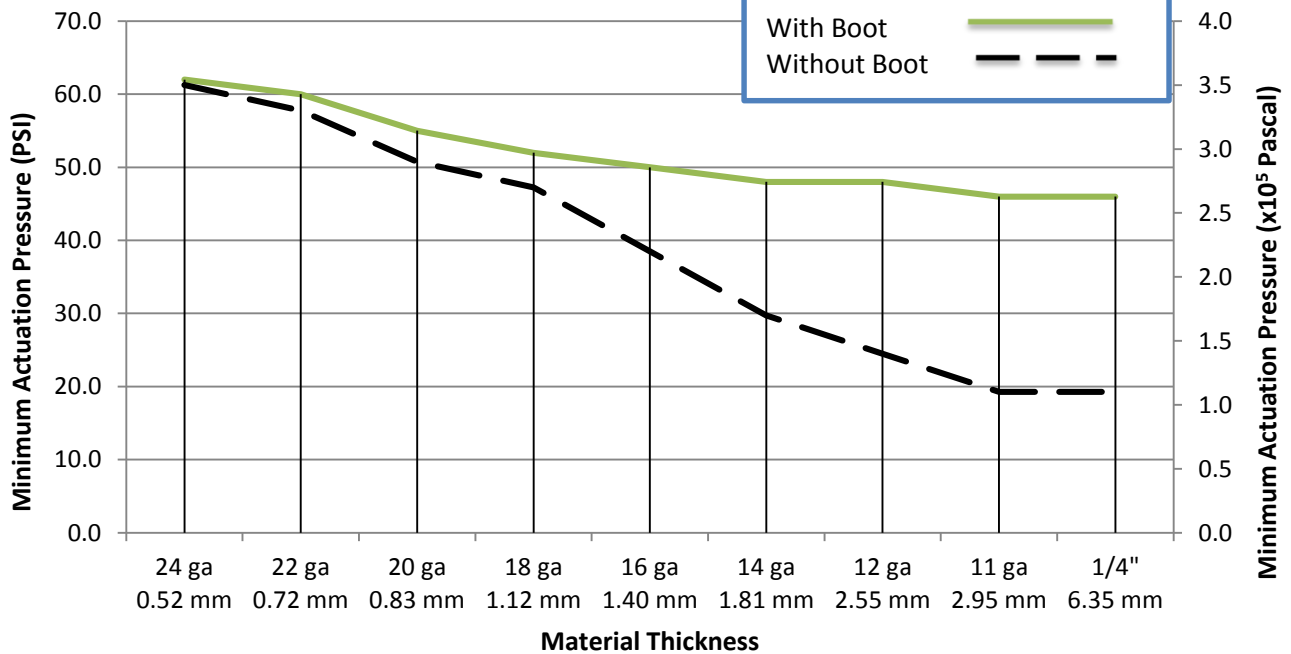
Part Number 110650
 Revision Date: July 29, 2013

* Max Breakaway determined in laboratory environment on 2" thick SAE1018 Steel with surface roughness 63 micro inches. Many factors contribute to the actual breakaway force in each application. Always test the magswitch in each application before deployment. Refer to the magswitch information booklet for more information.

Magswitch M20AY JSC Working Load

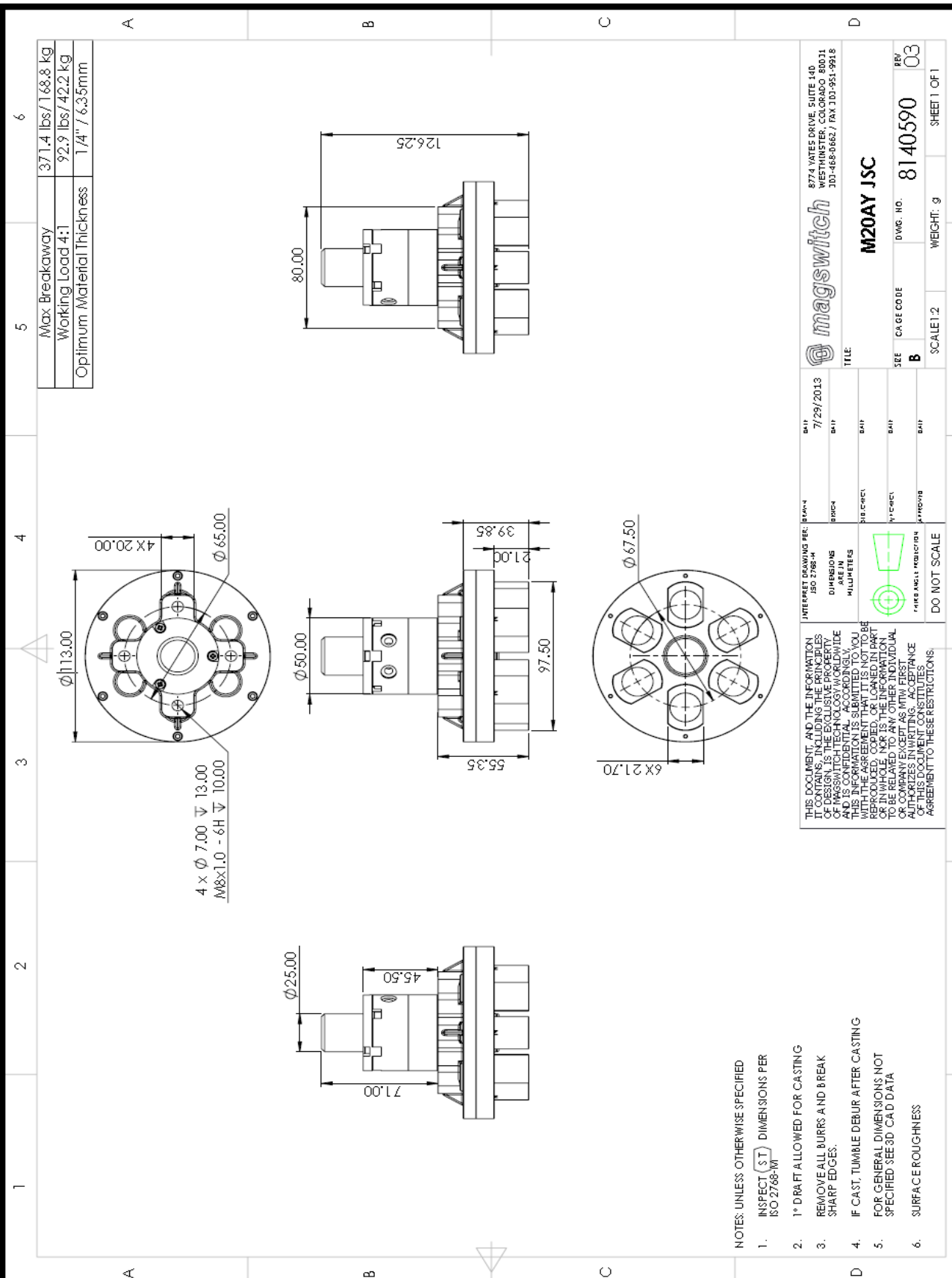


Actuation Vs. Material Thickness



Part Number 110650
Revision Date: July 29, 2013

* Max Breakaway determined in laboratory environment on 2" thick SAE1018 Steel with surface roughness 63 micro inches. Many factors contribute to the actual breakaway force in each application. Always test the magswitch in each application before deployment. Refer to the magswitch information booklet for more information.



- NOTES, UNLESS OTHERWISE SPECIFIED
- INSPECT (S) DIMENSIONS PER ISO 2768-M
 - 1° DRAFT ALLOWED FOR CASTING
 - REMOVE ALL BURRS AND BREAK SHARP EDGES.
 - IF CAST, TUMBLE DEBUR AFTER CASTING
 - FOR GENERAL DIMENSIONS NOT SPECIFIED SEE 3D CAD DATA
 - SURFACE ROUGHNESS

DATE		7/29/2013
DESIGNER		
DRAWN		
CHECKED		
IN CHARGE		
APPROVED		
M20AY JSC		
SIZE	CA RE CODE	DWG. NO. 8140590
REV		03
SCALE	1:2	WEIGHT: 9
		SHEET 1 OF 1

INTERPRET DRAWING PER: ISO 2768-M
 DIMENSIONS ARE IN MILLIMETERS
 THIS DOCUMENT, AND THE INFORMATION IT CONTAINS, INCLUDING THE PRINCIPLES OF DESIGN, IS THE EXCLUSIVE PROPERTY OF M20AY JSC. NO PART OF THIS DOCUMENT OR THE INFORMATION CONTAINED HEREIN IS TO BE REPRODUCED, COPIED, OR LOANED IN PART OR IN WHOLE TO ANY OTHER INDIVIDUAL OR COMPANY EXCEPT AS AUTHORIZED BY M20AY JSC. ACCEPTANCE OF THIS DOCUMENT CONSTITUTES AGREEMENT TO THESE RESTRICTIONS.



Part Number 110650
 Revision Date: July 29, 2013