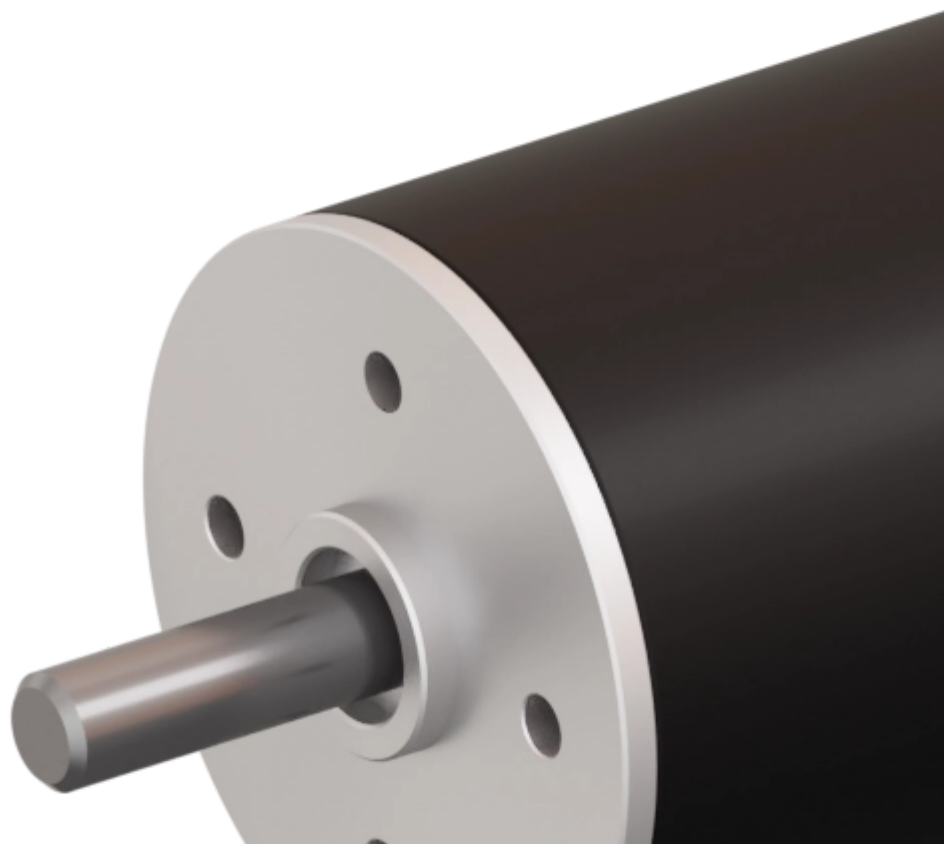


variables/V-color

# **Micromotors | Slotless BLDC motor | SVTN A 02-2040-30-S-H**







## Feature

### SVTN A 02-2040-30-S-H

|                             |             |
|-----------------------------|-------------|
| <b>Nominal voltage</b>      | 30 V        |
| <b>No load speed</b>        | 40700 rpm   |
| <b>No load current</b>      | 60 mA       |
| <b>Nominal speed</b>        | 36777 rpm   |
| <b>Nominal torque</b>       | 6.300 mNm   |
| <b>Nominal current</b>      | 0.960 A     |
| <b>Stall torque</b>         | 65.000 mNm  |
| <b>Stall current</b>        | 9.400 A     |
| <b>Max. efficiency</b>      | 84.700 %    |
| <b>Terminal resistance*</b> | 3.190 ?     |
| <b>Terminal inductance*</b> | 0.470 mH    |
| <b>Torque constant</b>      | 6.990 mNm/A |
| <b>Speed constant</b>       | 1365 mNm/V  |

**Notice :** The provided technical data are the higher limits recommended in static condition. To obtain the correct dimensioning of the product, it is necessary to hold account of all the applicable dynamic forces, including the inertia of the manipulator, the configuration of the tools and the external forces applied.

## High-Speed Brushless DC Motors

### SVTN A 02-2040-30-S-H

|                                 |                |
|---------------------------------|----------------|
| <b>Speed/torque gradient</b>    | 622.80 rpm/mNm |
| <b>Mechanical time constant</b> | 4.500 ms       |

## SVTN A 02-2040-30-S-H

### Rotor inertia

0.690 gcm<sup>2</sup>

Typically employed in the medical field for surgical tools, these motors merge the SVTN A Series characteristics to an optimized project for high-speed functions. Thanks to a precise balancing of the rotor and the use of special bearings, maximum stability, and low noise are guaranteed.



### Advantages

- Winding technology without metal bodies
- Good heat dissipation and high overload capacity
- Long life expectancy



### Benefits

- Light and compact, easy integration
- High reliability
- Good return on investment



**pes**

product  
engineering  
services

---

**expertise in connectivity**