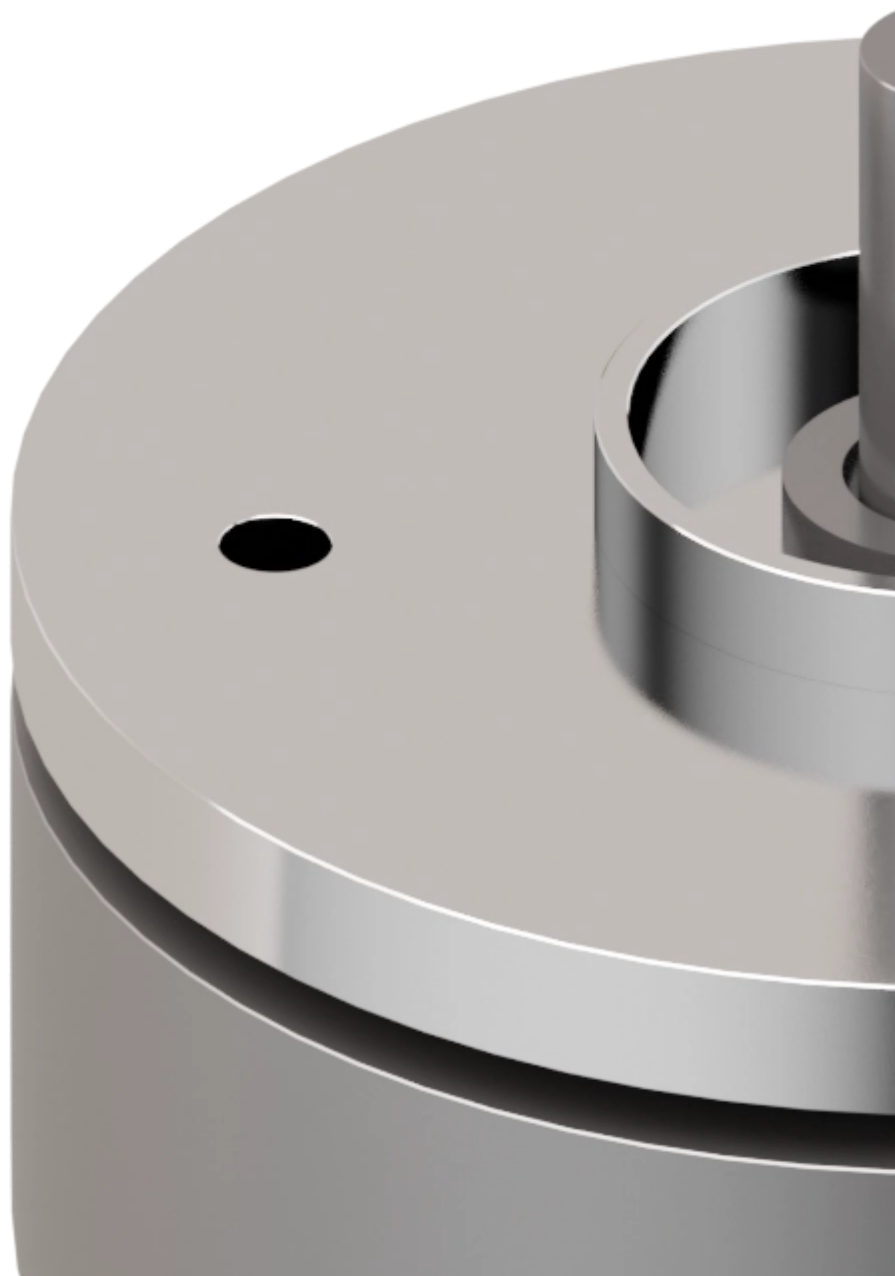


variables/V-color

Micromotors | Flat Brushless DC Motors | SVTM F 05-964-48-S-WO





Feature

SVTM F 05-964-48-S-WO

Nominal voltage	48 V
No load speed	1900 rpm
No load current	0 mA
Nominal speed	1670 rpm
Nominal torque	964.000 mNm
Nominal current	3.900 A
Stall torque	3000.000 mNm
Stall current	13.000 A
Terminal resistance*	0.650 ?
Terminal inductance*	0.900 mH
Torque constant	241.000 mNm/A

Notice : The provided technical data are the higher limits recommended in static condition. To obtain the correct dimensioning of the product, it is necessary to hold account of all the applicable dynamic forces, including the inertia of the manipulator, the configuration of the tools and the external forces applied.

Brushless DC Compact Motor

SVTM F 05-964-48-S-WO

Rotor inertia 5000.000 gcm²

The natural geometry of the outrunner Brushless Flat Motors, as well as the iron core winding, are the perfect fit for applications requiring high-torque in reduced dimensions. Simplified design, high-end material selection, and automated manufacturing make Flat Motors a high-

performance solution at a competitive price. Our vocation in listening to the client's requirements has led us to develop a customization-minded offer, focusing on specific application requirements such as integrated feedbacks, special cables, and custom shape of shafts and flanges.



Advantages

- Compact
- High Torque
- High-quality materials and automated manufacturing
- Highly customizable



Benefits

- Compact motor leads to compact design
- High Efficiency
- Good quality/price ratio
- Better and easier integration



pes

product
engineering
services

expertise in connectivity