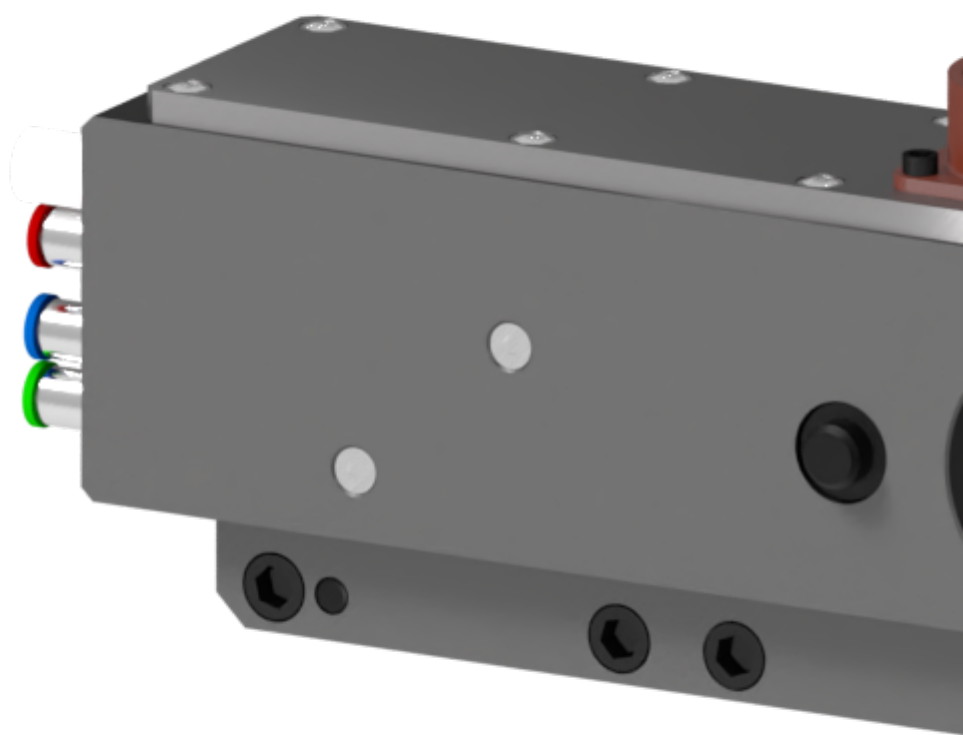


variables/V-color

Robot Tool Changers | Electrical module | S.1-EM-R-E-3VS-B02-S





Feature

S.1-EM-R-E-3VS-B02-S

Type	Electrical module
Weight	1.660 kg
Size	63 x 233 x 99 mm
Pass Through Utilities	3 x KJ06 1/8" 6mm
Material	Aluminum, Stainless Steel, Gold, Plastic, Copper
Connector	1 x M12 COD-D 4CTS Profinet 1 x MS 24CTS
Sensor	Tool presence safety switch
Safety Loop	Pneumatic safety loop 3EV+3 pressure switches

Notice : The provided technical data are the higher limits recommended in static condition. To obtain the correct dimensioning of the product, it is necessary to hold account of all the applicable dynamic forces, including the inertia of the manipulator, the configuration of the tools and the external forces applied.

A TOR standard control module, narrow version 3VS

Along with the standard offer of pneumatic and electrical modules, PES proposes engineering capabilities for developing custom electrical/pneumatic modules or accessories for Sigma Series tool changers. We offer a wide range of off-the-shelf custom modules enhancing Sigma tool changers communication capabilities or safety and if needed, we will be pleased to adapt our product to your specific

requirements. Standard Air/Water modules are listed below. Do not hesitate to contact us to share your specific requirements in order to find the right solution that meets your needs



Advantages



Benefits



pes

product
engineering
services

expertise in connectivity