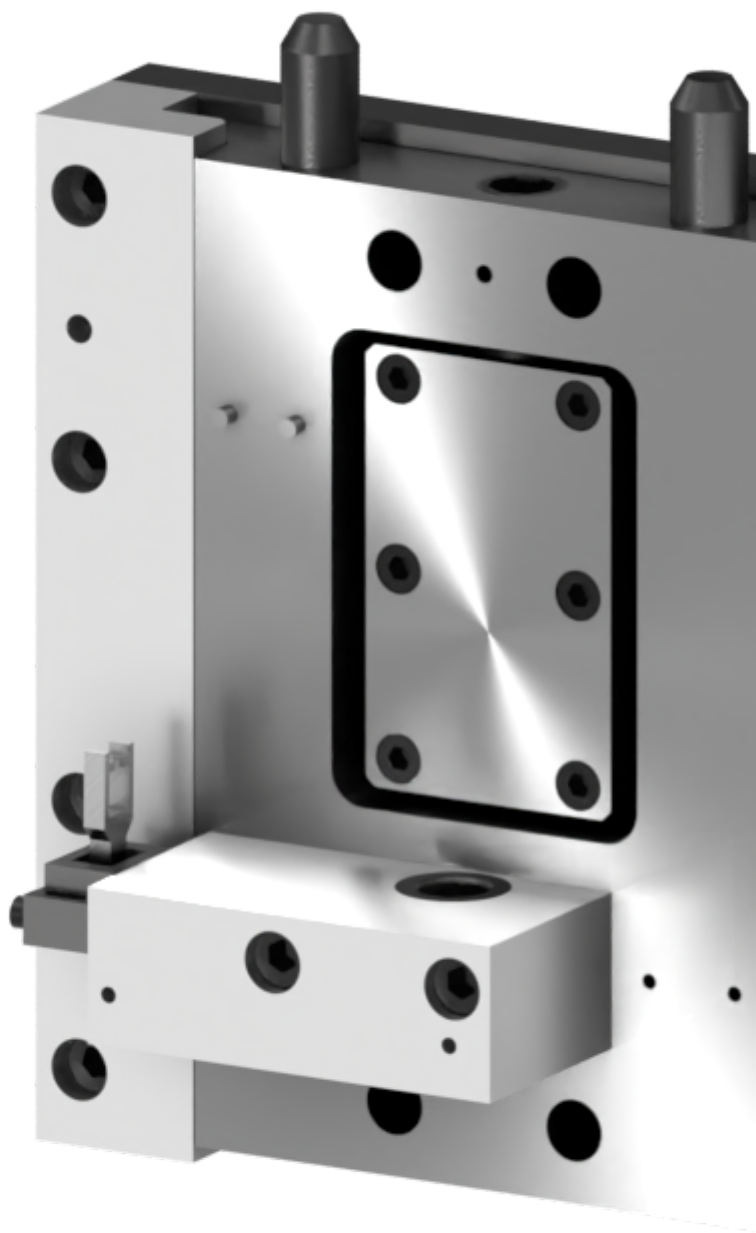


variables/V-color

Robot Tool Changers | spring-loaded compliant | XCF-CA-MMC-NP-NET-02





Feature

XCF-CA-MMC-NP-NET-02

Type spring-loaded compliant

Weight 14.060 kg

Size 301 x 263 x 119 mm

Material Aluminum

Notice : The provided technical data are the higher limits recommended in static condition. To obtain the correct dimensioning of the product, it is necessary to hold account of all the applicable dynamic forces, including the inertia of the manipulator, the configuration of the tools and the external forces applied.

Standard compliant support

The spring-loaded compliant assembly consists of two main components, the spring-loaded compliance assembly, and the tool mounting bracket. The spring-loaded compliance assembly(s) is mounted to the Weldment base while the Tool mounting bracket is mounted directly on to your tool (gripper, weld gun, etc.). A special version (XCF-CA-MMC-NP-NET-02) of the standard compliant fixture for welding guns has been developed to work with DeviceNet network, Interbus S or Profibus DP. The unit comes with an integrated safety switch and compliant target (fork) to insure proper alignment during tool removal. Tool mounting bracket sold separately.



Advantages



Benefits



pes

product
engineering
services

expertise in connectivity