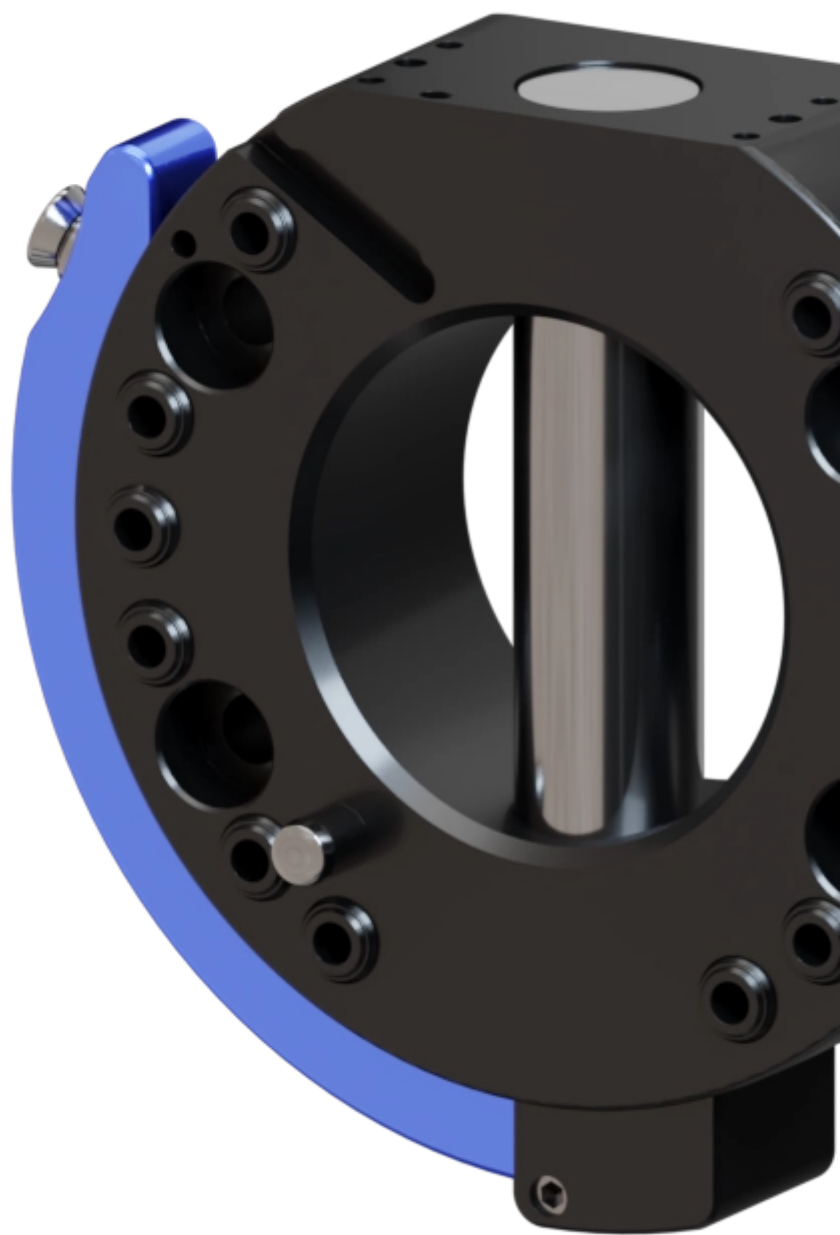


variables/V-color

Robot Tool Changers || SHS125





Feature

	Master Adaptor	Tool Adaptor
Reference	G-SHS125-O	G-SHS125-U
Payload	100 kg	
Moment - Mx, My	1800 Nm	
Moment - Mz	377 Nm	
Repeatability - X, Y	0.020 mm	
Maximum Axial Tensile Force (no damage if exceeded)	AL, Anod.	



Operating conditions

Operating temperature	5-60°C
Operating pressure	6 bar ±1
User pneumatic pressure	6 bar ±1

Optimize your processes with the SHS050: the fast and reliable tool changer for uninterrupted production.

The **SHS125** tool changer is designed to facilitate quick equipment changes in various industrial applications. Acting as a reliable and repeatable mechanical connector, it allows for easy robot tool changes or tool holder mobility. This device enhances the versatility and scalability

of your systems while reducing downtime. With its easy installation and integrated pneumatic feedthroughs, it easily replaces the **SHA-125-000-000** model, ensuring compatibility with **SCHUNK 310441 SHA-100-000-000** and **SCHUNK 310440 SHK-100-000-000**, guaranteeing consistent performance and time savings during maintenance operations.



Advantages

- Withstands high loads with low dead weight
- Can be released and closed with one handle
- During locking, the lower assembly is pulled around the locking stroke
- Interface according to DIN EN ISO 9409-1
- Does not require a deep review of the mechanical structure to be integrated.
- Cost savings through reduced maintenance downtime.
- Improved equipment versatility and upgradability and then extended productivity.
- Mitigate the need of specifically designed mounting interfaces



Benefits



expertise in connectivity