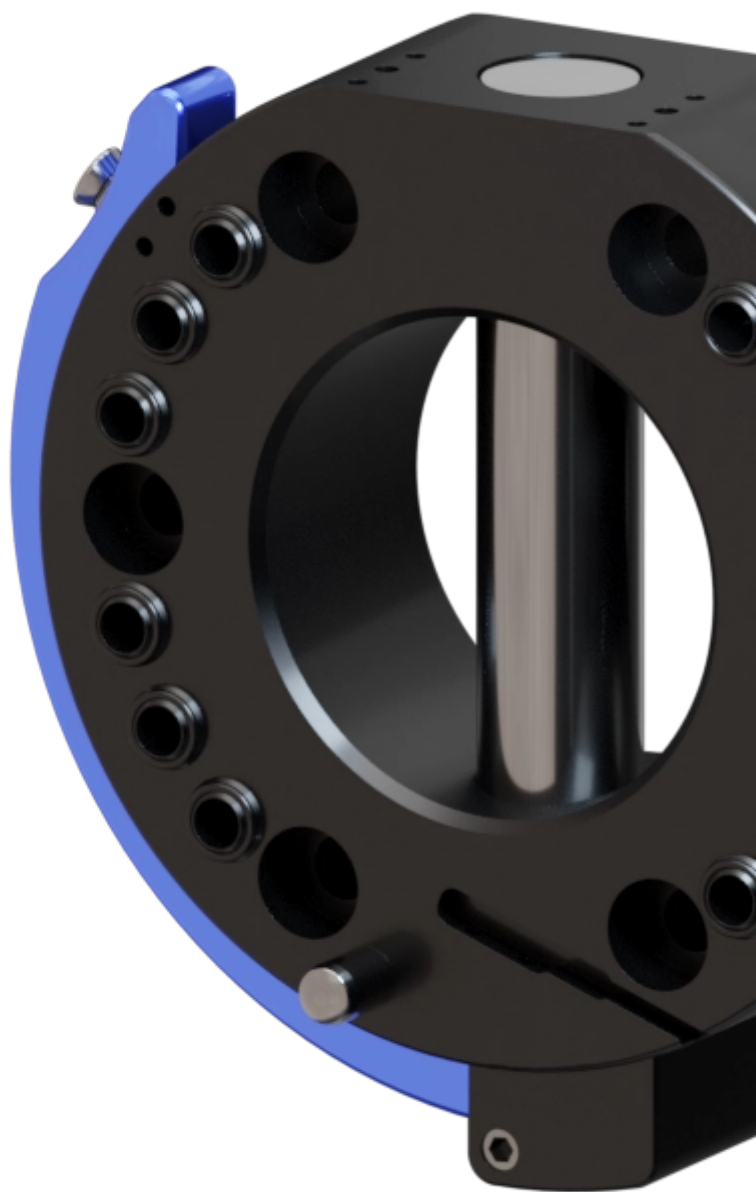


variables/V-color

## **Robot Tool Changers | | SHS160**







## Feature

	Master Adaptor	Tool Adaptor
Reference	G-SHS160-O	G-SHS160-U
Payload	125 kg	
Moment - Mx, My	3000 Nm	
Moment - Mz	626 Nm	
Repeatability - X, Y	0.020 mm	
Maximum Axial Tensile Force (no damage if exceeded)	AL, Anod.	



## Operating conditions

Operating temperature	5-60°C
Operating pressure	6 bar $\pm$ 1
User pneumatic pressure	6 bar $\pm$ 1

**Optimize your processes with the SHS050:  
the fast and reliable tool changer for  
uninterrupted production.**

The **SHS160** tool changer is designed to facilitate quick equipment changes in various industrial applications. Acting as a reliable and repeatable mechanical connector, it allows for easy robot tool changes or tool holder mobility. This device enhances the versatility and scalability

of your systems while reducing downtime. With its easy installation and integrated pneumatic feedthroughs, it easily replaces the **SHA-160-000-000** model, ensuring compatibility with **SCHUNK 310450 SHK-125-000-000** and **SCHUNK 310451 SHA-125-000-000**, guaranteeing consistent performance and time savings during maintenance operations.



### Advantages

- Withstands high loads with low dead weight
- Can be released and closed with one handle
- During locking, the lower assembly is pulled around the locking stroke
- Interface according to DIN EN ISO 9409-1
- Does not require a deep review of the mechanical structure to be integrated.
- Cost savings through reduced maintenance downtime.
- Improved equipment versatility and upgradability and then extended productivity.
- Mitigate the need of specifically designed mounting interfaces



### Benefits



**pes**

product  
engineering  
services

**expertise in connectivity**