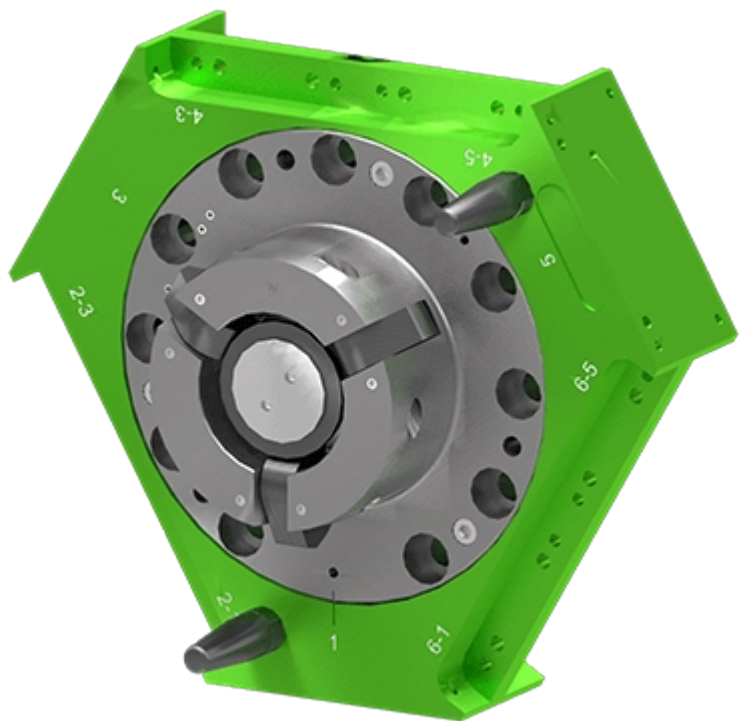


variables/V-color

Robot Tool Changers || Epsilon ES160



Feature

	Master Adaptor	Tool Adaptor
Reference	ERS160	ETS160
Payload	800 kg	

	Master Adaptor	Tool Adaptor
Moment - Mx, My	5649 Nm	
Moment - Mz	5 Nm	
Size	242.9x280.5x120 mm	242.9x280.5x120 mm
Weight	13.890 kg	13.890 kg
Couple/uncouple port	G1/8	n/a
Repeatability - X, Y	0.020 mm	
Repeatability - Z	0.020 mm	
Maximum Axial Tensile Force (no damage if exceeded)	37.120N @ 0 bar couple port input pressure	



Operating conditions

Operating temperature 5-60°C

Operating pressure 6 bar \pm 1

User pneumatic pressure 6 bar \pm 1

Epsilon exceptional lifting force for a small footprint

The line was designed to be a comprehensive family of tool changers that cover the entire range of the current CXC, MXC and Sigma tool changers we already make (ranging from 10kg. to 1,500kg.)

This is a Tool Changer Evolution. Our cam design has stood the test of time and even with extensive research; we couldn't do anything better. In fact, we are so confident in our locking mechanism that we offer a

lifetime guarantee on it. We also made sure to incorporate new market requirements and customer feedback to design these tool changers; that's why we extended the availability of couple/uncouple sensing and came up with a direct bolt design to limit the need of adaptor plates.



Advantages

- High Strength Aluminum Alloy Body
- **Cam Locking Mechanism with :**
- Lifetime Guarantee
 - Self-Centering
 - Wear Compensating
 - Self-Cleaning
 - Positive Cam Retraction
- Optional Couple/Uncouple Sensing
- Optional Tool Present Sensing
- 8x G1/8 User Pneumatic Ports



Benefits

- Maximul robot payload still available
- Reduced maintenance cost
- Minimized total cost of ownership
- Easier installation, less accessories costs



expertise in connectivity