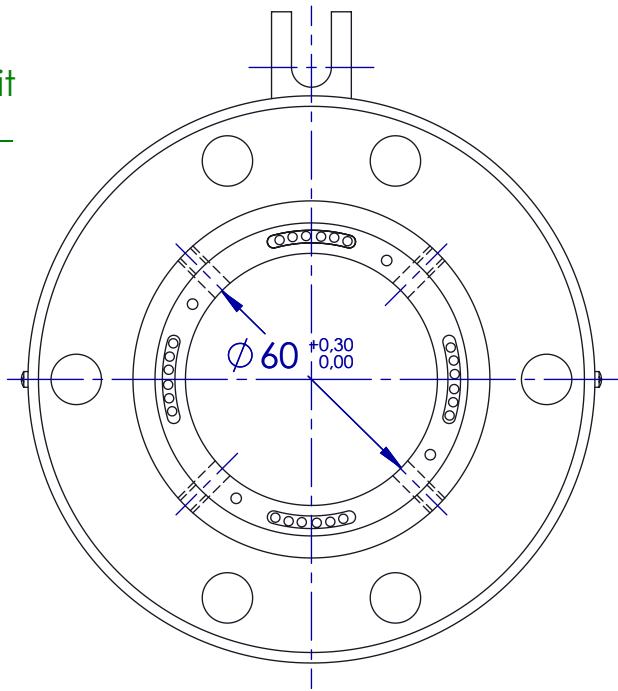
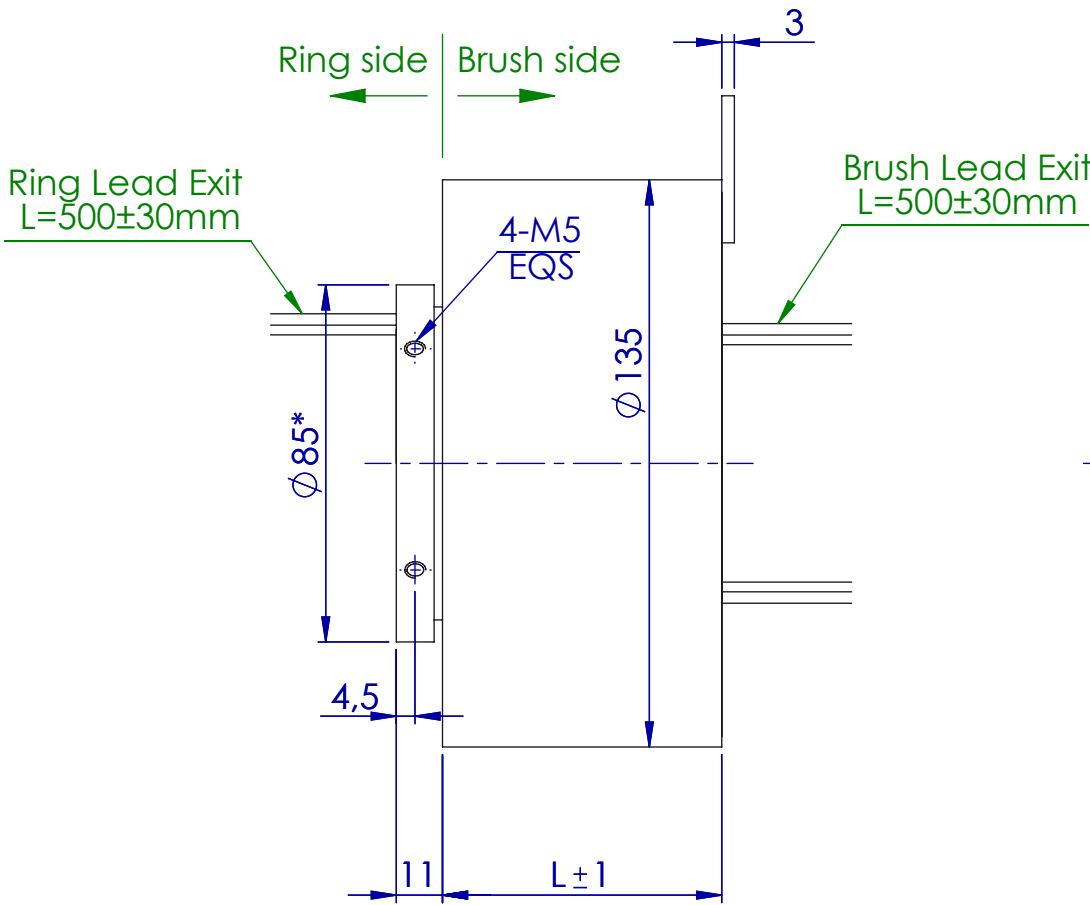
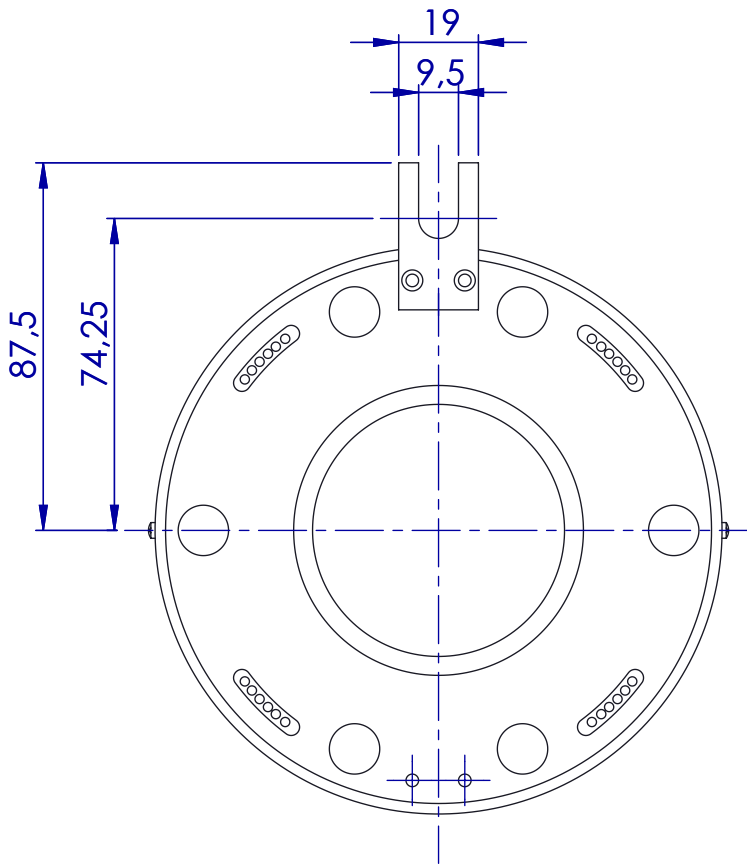


All rights strictly reserved.  
Reproduction or issue to third parties in any form whatever is not permitted without written authority from the property

Tutti i diritti sono strettamente riservati. La riproduzione o la comunicazione a terzi è vietata in qualunque forma senza autorizzazione scritta della proprietà



	Total	Power	Signals		Weight(kg)			Total	Power	Signals		Weight(kg)	
		20A	5A		IP51	IP65			20A	5A		IP51	IP65
SVTS C 07-x-A-06/00	6	6	-	66,5	1,3	2,1	SVTS C 07-x-A-36/00	36	36	-	216,5	3,2	6
SVTS C 07-x-A-00/12	12	-	12	66,5	1,3	2,1	SVTS C 07-x-A-30/12	42	30	12	216,5	3,2	6
SVTS C 07-x-A-12/00	12	12	-	96,5	1,7	2,9	SVTS C 07-x-A-24/24	48	24	24	216,5	3,2	6
SVTS C 07-x-A-06/12	18	6	12	96,5	1,7	2,9	SVTS C 07-x-A-18/36	54	18	36	216,5	3,2	6
SVTS C 07-x-A-00/24	24	-	24	96,5	1,7	2,9	SVTS C 07-x-A-12/48	60	12	48	216,5	3,2	6
SVTS C 07-x-A-18/00	18	18	-	126,5	2,1	3,7	SVTS C 07-x-A-06/60	66	6	60	216,5	3,2	6
SVTS C 07-x-A-12/12	24	12	12	126,5	2,1	3,7	SVTS C 07-x-A-00/72	72	-	72	216,5	3,2	6
SVTS C 07-x-A-06/24	30	6	24	126,5	2,1	3,7	SVTS C 07-x-A-42/00	42	42	-	264,5	3,6	6,7
SVTS C 07-x-A-00/36	36	-	36	126,5	2,1	3,7	SVTS C 07-x-A-36/12	48	36	12	264,5	3,6	6,7
SVTS C 07-x-A-24/00	24	24	-	156,5	2,4	4,4	SVTS C 07-x-A-30/24	54	30	24	264,5	3,6	6,7
SVTS C 07-x-A-18/12	30	18	12	156,5	2,4	4,4	SVTS C 07-x-A-24/36	60	24	36	264,5	3,6	6,7
SVTS C 07-x-A-12/24	36	12	24	156,5	2,4	4,4	SVTS C 07-x-A-18/48	66	18	48	264,5	3,6	6,7
SVTS C 07-x-A-06/36	42	6	36	156,5	2,4	4,4	SVTS C 07-x-A-12/60	72	12	60	264,5	3,6	6,7
SVTS C 07-x-A-00/48	48	-	48	156,5	2,4	4,4	SVTS C 07-x-A-06/72	78	6	72	264,5	3,6	6,7
SVTS C 07-x-A-30/00	30	30	-	186,5	2,8	5,1	SVTS C 07-x-A-00/84	84	-	84	264,5	3,6	6,7
SVTS C 07-x-A-24/12	36	24	12	186,5	2,8	5,1	SVTS C 07-x-A-48/00	48	48	-	276,5	4	7,5
SVTS C 07-x-A-18/24	42	18	24	186,5	2,8	5,1	SVTS C 07-x-A-42/12	54	42	12	276,5	4	7,5
SVTS C 07-x-A-12/36	48	12	36	186,5	2,8	5,1	SVTS C 07-x-A-36/24	60	36	24	276,5	4	7,5
SVTS C 07-x-A-06/48	54	6	48	186,5	2,8	5,1	SVTS C 07-x-A-30/36	66	30	36	276,5	4	7,5
SVTS C 07-x-A-00/60	60	-	60	186,5	2,8	5,1	SVTS C 07-x-A-24/48	72	24	48	276,5	4	7,5
							SVTS C 07-x-A-18/60	78	18	60	276,5	4	7,5
							SVTS C 07-x-A-12/72	84	12	72	276,5	4	7,5
							SVTS C 07-x-A-06/84	90	6	84	276,5	4	7,5
							SVTS C 07-x-A-00/96	96	-	96	276,5	4	7,5

	Power Rings	Signal Rings
Current	20A	5A
Voltage	600Vac/600Vdc	240Vac/240Vdc
Leads AWG	12	22
Contact material	Precious metals	Precious metals
Dielectric strength	1500VAC@60Hz,60s	500VAC@60Hz,60s
Insulation resistance	≥1000MΩ/500VDC	≥500MΩ/500VDC
Leads	tinning PTFE	
Dynamic contact resistance	<100mΩ @6Vdc 50mA 5RPM	
Suggested Speed	400RPM	
Temperature	-20°C~+80°C(ET option -40°C~+80°C)	
Housing material	engineering plastic*	
Protection degree	IP51*	
Bearings	steel ball bearings	

\*Note: For IP65 option L=L+14mm and Ø 75mm - Housing material aluminum alloy

TRATTAMENTO TREATMENT:		4		
		3	01/06/2016	Aggiornamento Part Number
		2	02/11/2015	Aggiunte caratteristiche di massa
		1	14/02/2013	Correzione caratteristiche elettriche
MATERIALE MATERIAL:		0	21/05/2012	Prima emissione
		REV. Nr REV N°	DATA/DATE	DESCRIZIONE/DESCRIPTION
PESO WEIGHT		Tolleranze/Tolerances UNI EN 22768-1		
		FINE		
		MEDIA		X
		GROSSOLANA		
		MOLTO GROSSOLANA		
		TITLE - TITOLO SVTS C 07		
		DRAWING Nr. - DISEGNO N° 000-075		
		DATE DATA	21/05/2012	SH. FG. 1
		CHECK CONTR.	AG	DRAW. DIS. AG
PROPERTY PROPRIETÀ		FORM A3		
		SERVOTECNICA S.P.A. - VIA MAJORANA,4 - NOVA MILANESE(MB) - www.servotecnica.com		